

A close-up photograph of two bright orange beetles with black spots on their backs, perched on a vibrant green leaf. The background is a soft-focus green, suggesting a natural habitat. The text is overlaid in white, bold, sans-serif font.

Integrative conservation program for Zamiaceae in Santander Colombia JBEV-CDMB



THREE SPECIES

Zamia encephalartoides D.W.Stev.

Zamia incognita A.Lindstr. & Idárraga

Zamia incognita A.Lindstr. & Idárraga



Zamia encephalartoides D.W.Stev.



DISTRIBUTION OF THE *Zamia encephalartoides* POPULATIONS



RESEARCH INTERNSHIPS

➤ Demographic and habitat description of a *Zamia encephalartoides* population and comparison of functional traits in two species of the genus of *Zamia*: (*Z. encephalartoides* y *Z. incognita*).

Jhon Alexander Mantilla



1

- Describe demographic parameters, functional traits and habitat characteristics of a population of *Zamia encephalartoides* to provide new information and support the action plan for the conservation and protocol standardization: germination and propagation of the species.

The sampling area is a very steep rocky terrain type, with slopes of more than 30° which has a plant cover dominated by shrubs and some trees with large diameters. These are found in areas of low slope where there is a more structured soil allows the establishment of these tree species.





PHENOLOGICAL MONITORING

✓ Collection of cones



MANEJO DE SEMILLAS EN LABORATORIO

Extracción
de las
semillas del
estróbilo

Lavado de
las semillas

Remoción
del arilo

Lavado y
alcohol

Perforación
de la testa



✓ Monitoring the development of the seedling of *Zamia encephalartoides*



Outreaching with the community



Construction of the greenhouse “Menzuly” in a área of the Chicamocha river canyon to continue the propagation of *Zamia* species





Zamia incognita
A. Lindstr. & Idárraga





Zamia incognita A. Lindstr. & Idárraga



Estróbilo femenino , Hábito y estróbilo masculino de *Zamia muricata*.







¡SE BUSCA!



Planta Juvenil



Fruto Hembra



Fruto Macho

Planta
Adulta



JARDÍN BOTÁNICO ELOY VALENZUELA

Excelente Recompensa

Llame a los siguientes teléfonos

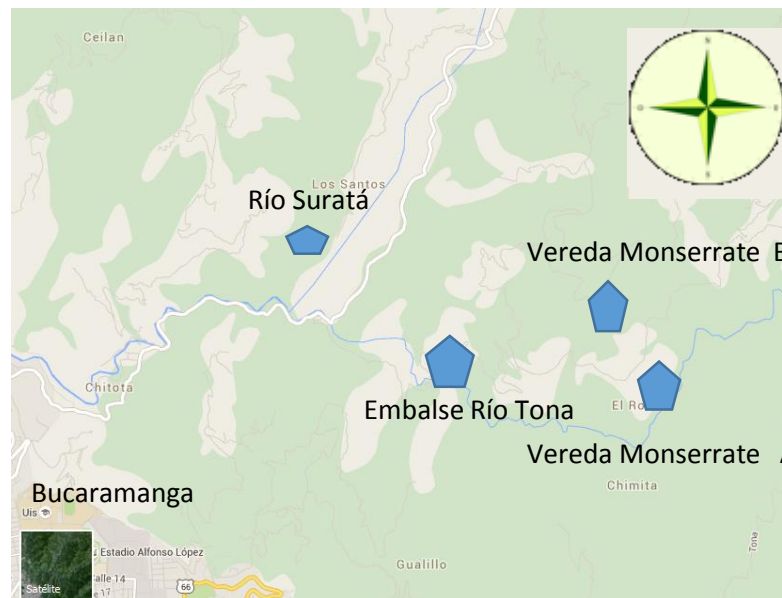
Sofía Gómez 3153507255

Alicia Rojas 3156420875



DISTRIBUTION OF THE *Zamia incognita* POPULATIONS

- Border between Bucaramanga y Tona
- 4 localities
1200 – 1400 masl
- Tropical dry forest

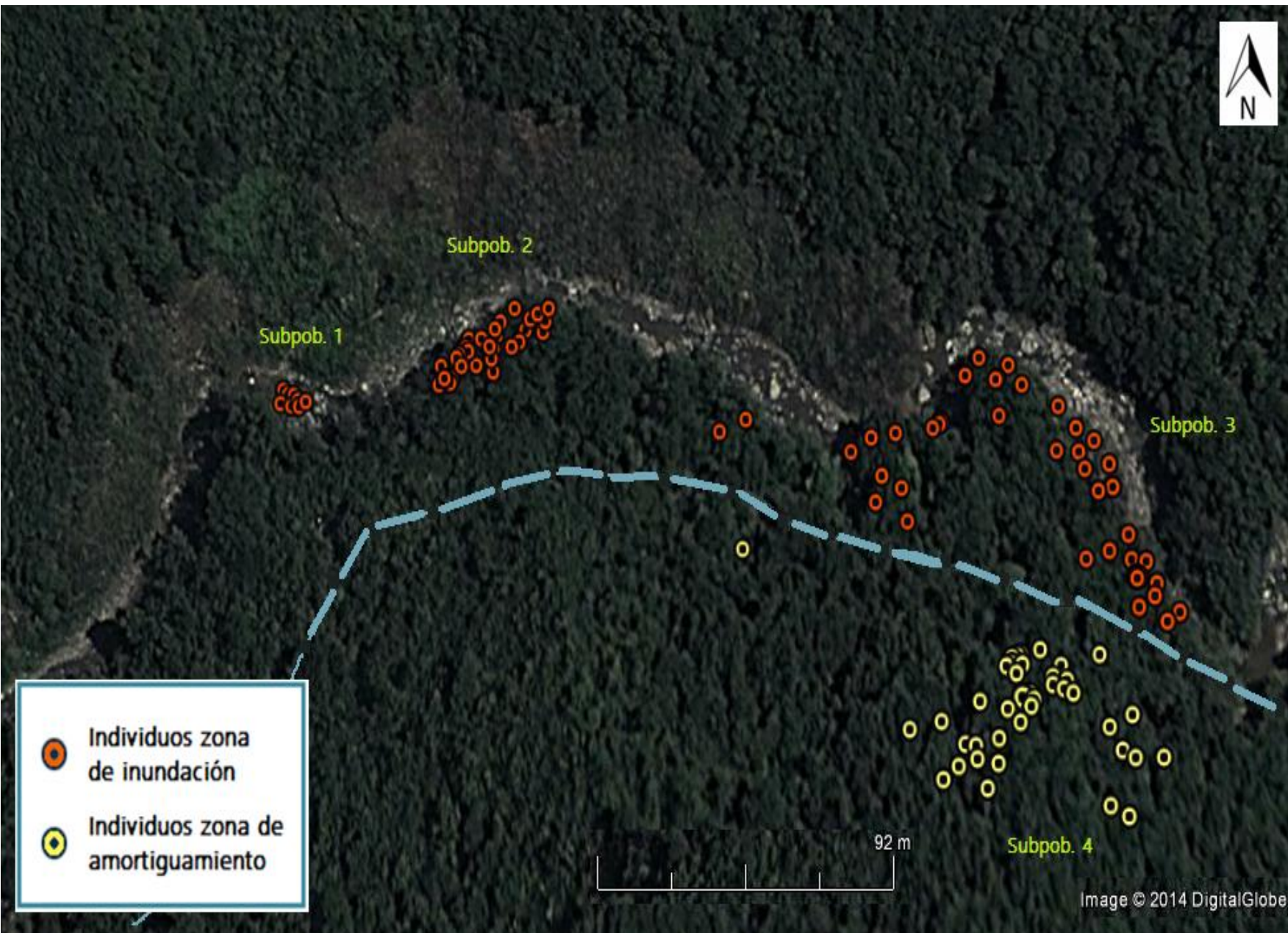


- Demographic and habitat characterization of a *Zamia incognita* A.Lindstr. & Idárraga. population to support the integral conservation program of priority plants in the tropical dry forest.

Raquel Sofía Gómez

Rescue and relocation of the population was carried out because the hábitat will be flooded.





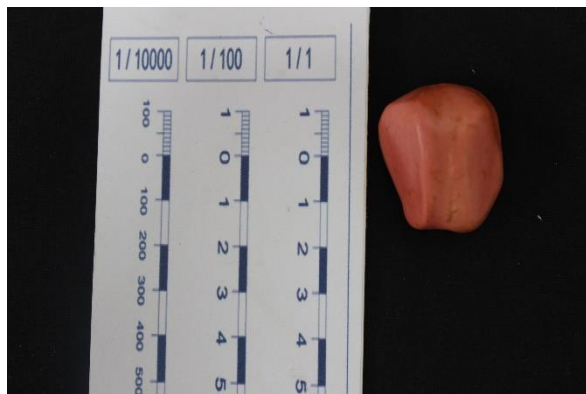


- Description of demographics, habitat and functional traits variability in three populations of *Zamia incognita* A.Lindstr. & Idárraga, in dry forests of Santander.



Jeffrey Vega





✓ Laboratory

- The seeds are extracted of the strobilus
- The seeds are washed
- The seed coat is removed
- The seed is perforated on the distal pole



- Monitoring the development of the seedling of *Zamia incognita* A.Lindstr. & Idárraga







Construction of the greenhouse in the botanical garden “Eloy Valenzuela” to continue the propagation of *Zamia* species







GRACIAS

ALICIA ROJAS

Profesional Especializada Corporación Autónoma Regional por la
Defensa de la Meseta de Bucaramanga - CDMB

Docente Cátedra Universidad Industrial de Santander - UIS

Tel Oficina: (07)6346100 ext 3140

Cel: [3156420875](tel:3156420875)

aliciarojasbotanica@gmail.com

alicia.rojas@cdmb.gov.co

